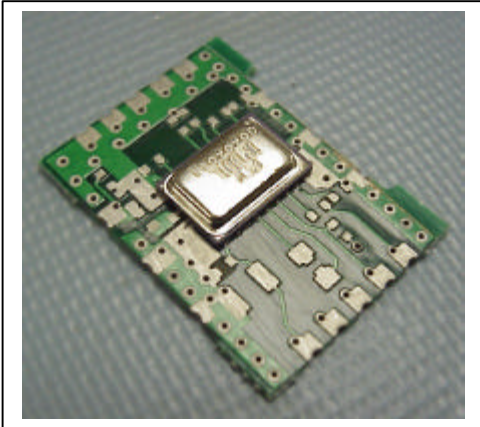


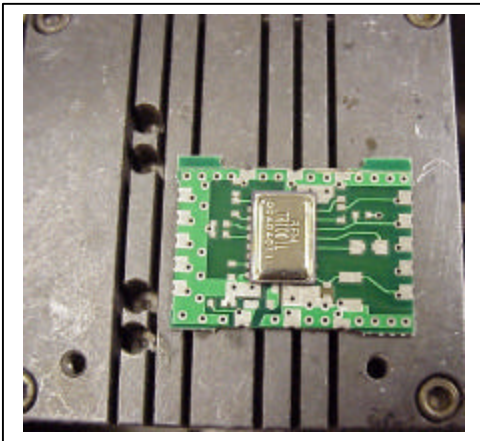
Removing the TX, RX and TR from the PCB

Using Hotplate

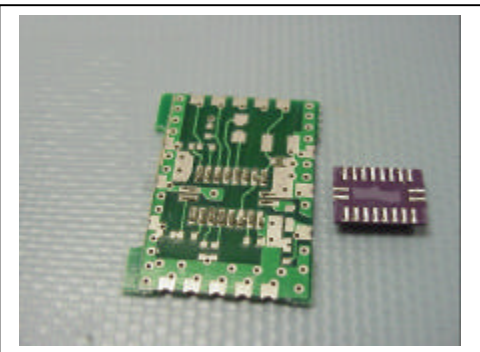
TR to be removed from PCB



Pre-heat the hotplate to 200°C.
Place the PCB on the top of the hotplate.

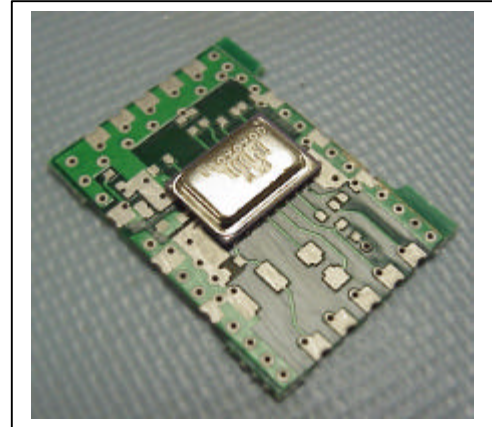


Remove the TR from the PCB.

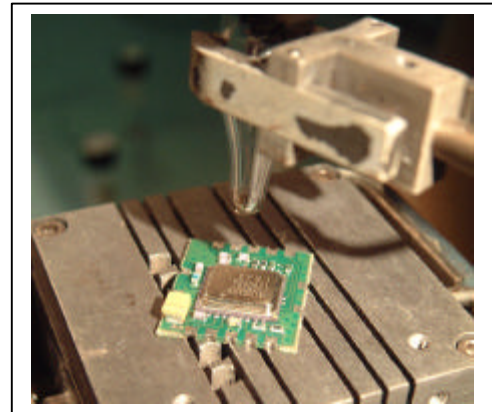


Using Hotgun

TR to be removed from PCB



Pre-heat the PCB with a hotgun.



Remove the TR from the PCB.

